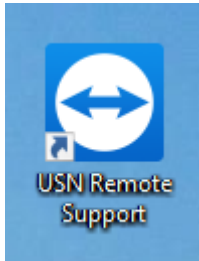


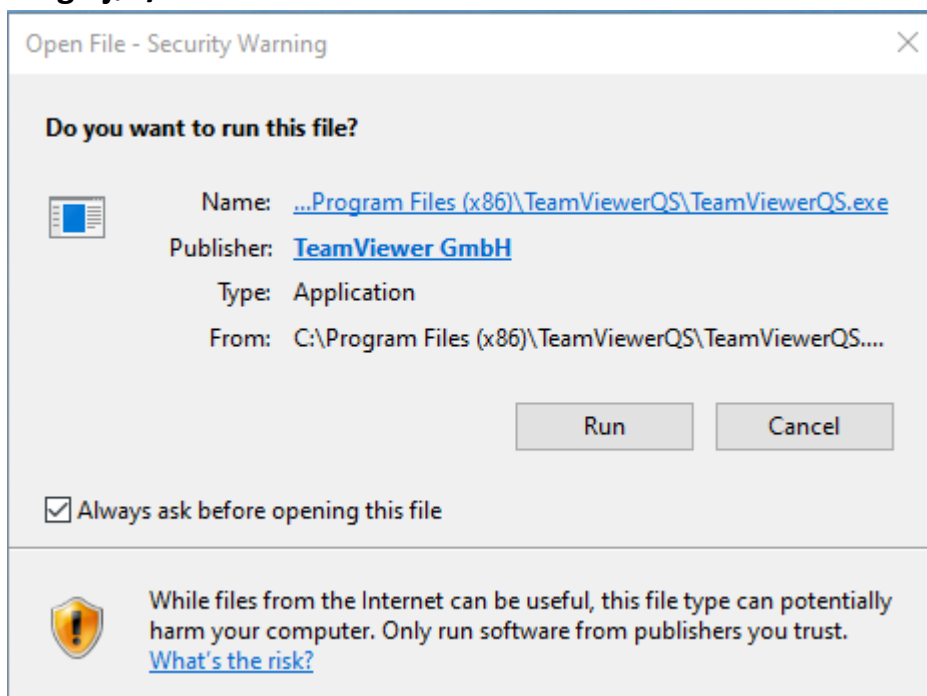
Bruerveiledning Team Viewer Quick Support

Ansatt PC-er

1. Trykk på USN Remote Support ikonet på skrivebordet ditt:

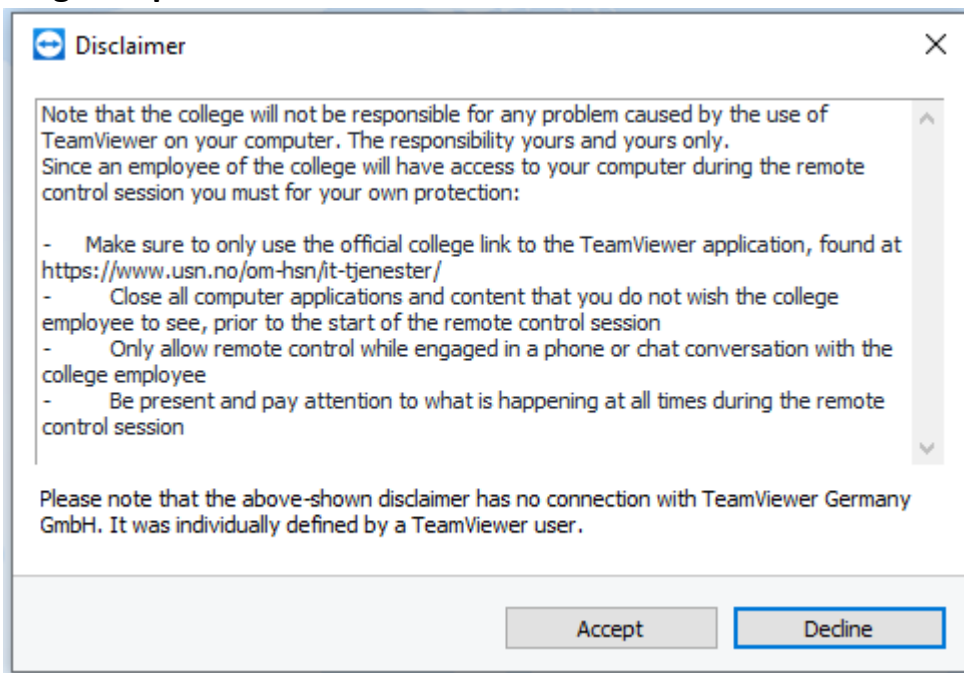


2. Velg Kjør/Run:

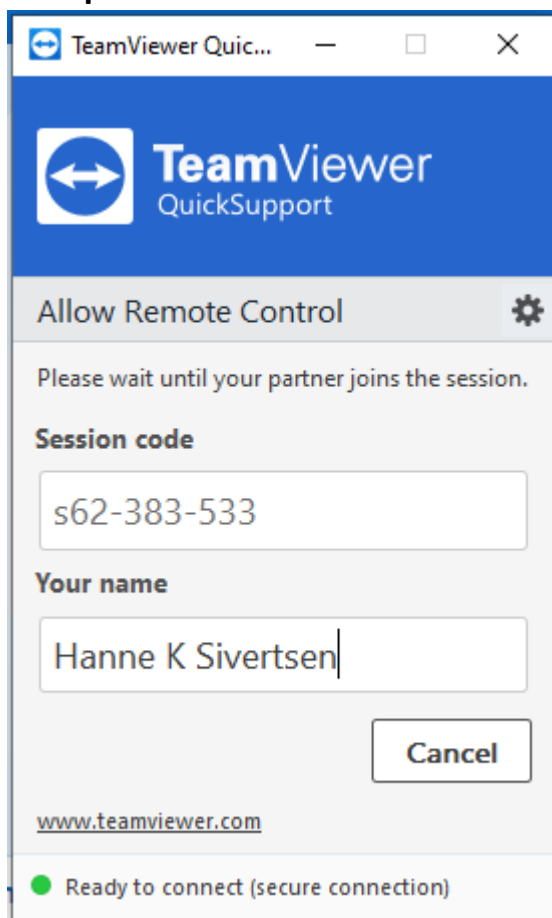


3. Skriv inn brukernavn og passord.

4. Velg Accept i Disclaimer vinduet:



5. Pass på navnet ditt står i ruten Your Name:



6. Godta forespørsel om fjernstyring ved å velge Allow:

